



Scupper RetroDrain

PRODUCT DATA SPECIFICATIONS

PRODUCT DESCRIPTION

Designed for existing through-wall/ side-wall or scupper drainage pipes, the aluminum and stainless steel drain components provide durability and compatibility with single ply, BUR and modified bitumen roofing systems. A metal clamping assembly creates a compression type termination in both vertical and horizontal wall flashings. The Scupper RetroDrain features the patented RAC Backflow Compression Seal for attachment to PVC or cast iron leader pipes, and a removable drain strainer. Available in 3-in., 4-in., 5-in. and 6-in. sizes. Custom configurations are also available.

FEATURES & BENEFITS

- Pre-punched drain flange provides stable attachment to the wall and roof deck.
- The RAC Backflow Compression Seal is quickly activated at drain flange level to protect the roofing system and building contents from water backup damage.
- .125-in. metal clamping ring assembly provides a compression type termination for the vertical and horizontal roof flashings. Stainless steel studs and lock nuts secure the clamping ring assembly to the drain flange.
- .060-in thick drain strainer is easily secured to the drain body with four stainless steel wing nuts and provides protection against rooftop debris.
- Simple and easy to install, saving the contractor time and money.

APPLICATION

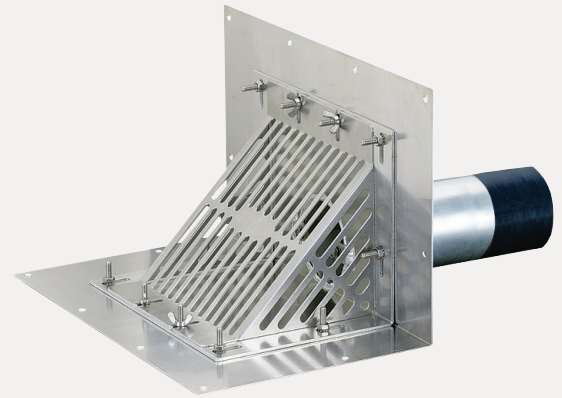
OlyFlow® RetroDrains are designed to replace existing drains in reroofing applications. Installed from the roof surface, OlyFlow RetroDrains are engineered to be installed without removing the existing plumbing or fixture while providing a watertight connection to the roof system and the existing plumbing.

APPROVALS & STANDARDS

ANSI/SPRI RD-1 is a national performance standard for retrofit roof drains. While most retrofit drains are not tested to this standard, OlyFlow Insert Drains – including the Scupper RetroDrain with RAC Backflow Compression Seal – exceed the standard, which requires that the seal hold a 10-ft. column of water for 24 hours without leaking.



IAPMO PS 97-96 – a standard plumbing industry test designed to check for leakage at connections under a 10 foot head of water for a 24 hour period. This test was performed by the Smith-Emery Company, a nationally recognized independent test laboratory providing physical testing of construction related materials. The Scupper RetroDrain produced no leakage.



PHYSICAL DATA

The data below is constant for all OMG Scupper RetroDrains.

DRAIN BODY		SEAL	
.080" thick aluminum		Watertight RAC Backflow Compression Seal requires 7/16" wrench	
FLANGE		STRAINER DOME	
16" x 10" x 10"		.060" thick aluminum	
STEM		CLAMP RING	
9" length		.125" thick metal	

ORDERING INFORMATION

CAT. NO.	SIZE IN	STRAINER TYPE	PKG QTY	DIMENSIONAL WEIGHT LBS
SCUPRD3	3	Aluminum	1	32
SCUPRD4	4	Aluminum	1	32
SCUPRD5	5	Aluminum	1	32
SCUPRD6	6	Aluminum	1	32



Scupper RetroDrain

INSTALLATION PROCEDURE

FOR USE WITH

All types of roof covers.

JOB PREPARATION

The existing leader pipe shall be cleaned of excess bitumen build-up, dirt and debris. Remove the clamping ring assembly and bolts from the existing drain and discard. If required, comply with roof manufacturer's directions for additional cleaning or detailing.

STEP 1

Important – The aluminum activation cone may have settled into the backflow seal during shipping, which may partially activate the seal. To deactivate the seal, simply push down on the top of the two backflow bolts. **Note:** The top of the tapered metal cone should remain inside the bottom of the urethane seal. Do not fully disengage the cone from the urethane seal.

STEP 2

Place the Scupper Retrofit Drain Assembly into the existing drain leader (vertical or horizontal) pipe. The drain flange(s) should be in contact with the surface of both the wall and roof.

STEP 3

Using the pre-punched holes in the perimeter of the flange, secure the drain flange to the substrate with appropriate fasteners.

STEP 4

Hand tighten the 7/16-in. bolts on the backflow rods to activate the seal. **Alternate tightening** between the bolts for an even seal expansion. Do not overtighten.

STEP 5

Install roof flashing material into place per primary roofing manufacturer's drain flashing details.

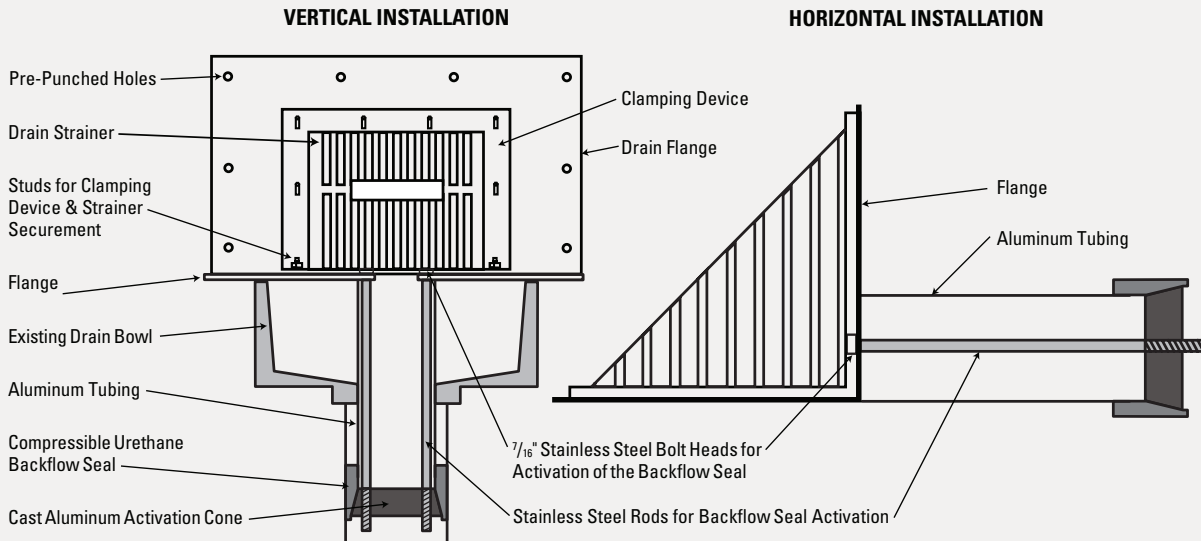
STEP 6

Install the metal clamping assembly into position by **hand-tightening** the lock nuts provided. Do not overtighten.

STEP 7

Install the drain strainer over the center of the drain opening and secure to 4 studs with the wing nuts provided.

**For technical assistance contact
OMG at 800-633-3800.**



ROOFING PRODUCTS

153 BOWLES ROAD, AGAWAM, MA 01001 USA
800-633-3800 413-789-0252 OMGROOFING.COM

OlyFlow™ is a trademark of OMG, Inc. Copyright © 2019 OMG, Inc. All rights reserved.

Superior productivity.
Superior performance.

