

# Two Component Adhesive Canisters - Operating Instructions.

Two component polyurethane adhesive is used to adhere a variety of board stocks to most roof substrates in both new and re-roof applications. It can also be used to adhere insulation board to insulation board. This product is dispensed in a semi-foamed bead that spreads to several inches while rising  $\frac{3}{4}$ - to 1-inch (19 to 25 mm) above the substrate. For insulation attachment, place the board stock into the adhesive and walk into place. A chemical cure takes place securing the board in approximately 4 to 8 minutes after application, depending on temperature and weather conditions. For fleece membrane attachment, follow instructions by membrane manufacturer.

Please read and understand all instructions.

## INSTRUCTIONS FOR ATTACHING HOSES TO CANISTERS

**STEP 1.** Remove hose and applicator assembly from carton.



**STEP 2.** Shake Canisters back and forth 30 times to get best mix. Replace canisters back in box.



**STEP 3.** Insert hoses through holes in side of carton.



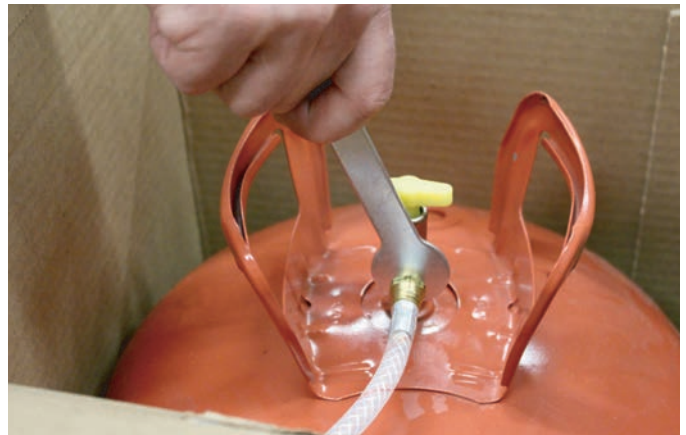
**STEP 4.** Attach swivel fitting on red striped hose, finger tight, to the valve outlet on top of the red cylinder.



**STEP 5.** Attach fitting on clear hose, finger tight, to the valve outlet of the white cylinder.



**STEP 6.** Tighten both fittings with the 9/16-in. wrench (provided) by turning an additional  $\frac{1}{6}$  turn until firmly attached. DO NOT OVERTIGHTEN! Close lid of each box to protect from sun, wind and dirt.



## APPLICATION TIPS AND TECHNIQUES

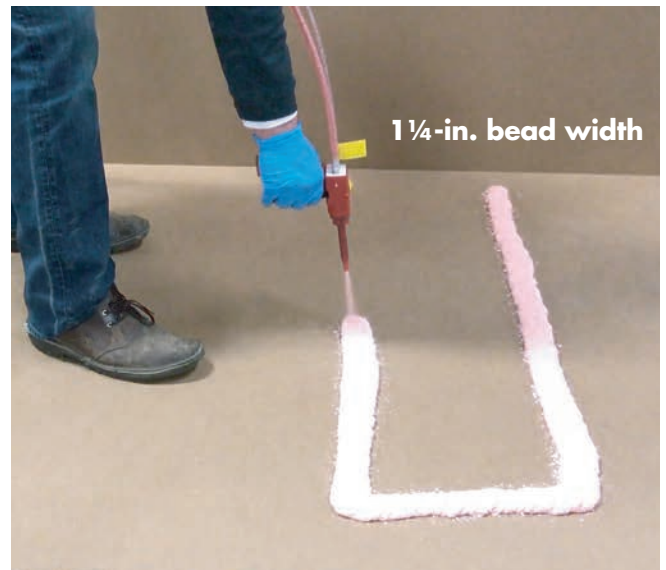
**STEP 7.** Apply lubricant to black rubber o-ring. Push both tabs on mix tip into slots on gun until they click, indicating it is "locked" in place.



**STEP 8.** For stand-up applications, users can elect to attach an extension tube to the mix tip. Simply, slide the extension tube over the end of the mix tip until it fits snugly. Ensure the extension tube is engaged with all 3 barbs of the mix tip.



## FOR INSULATION ATTACHMENT



For Best Results: When applying adhesive, the end of the mix tip or the extension tube should be no more than 4- to 6- inches above the surface of the roof.

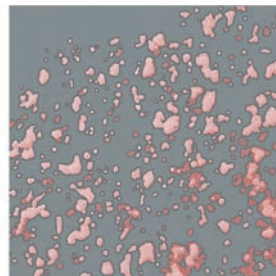


## FOR FLEECE MEMBRANE ATTACHMENT

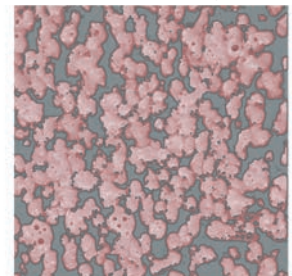


**Note:** Do not use the extension tube when using "spatter" technique. Pressurized canisters enable contractors to "spatter" the adhesive for use on fleece backed membrane. For best results, pull the trigger all the way to the handle and gently swing the gun back and forth while walking beside the membrane.

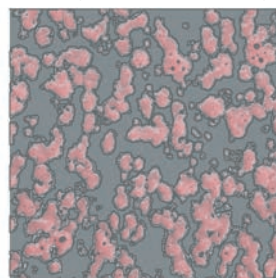
Too Light



More Than Enough



Just Right (60 - 75% Coverage)



The specific amount of adhesive dispensed is determined by the roofing system manufacturer. The illustrations provide a guideline for what's typically appropriate.





When not dispensing adhesives, ensure the trigger lock is down and extended (towards the gun handle).

### Section 1: General Safe Use Guidelines

- KEEP ALL SPRAY ADHESIVE OUT OF REACH OF CHILDREN.
- Read the Safety Data Sheet (SDS), Product Data Sheet, and Operating Instructions prior to using products.
- **IMPORTANT:** Remove mix tip and extension tube after 30 seconds of non-use to prevent any safety hazards when the mix tip is partially or fully clogged.
- Keep two-component canisters in an upright position while dispensing adhesive.
- Do not pull or lift canisters by the hoses.
- Do not dispense adhesive in area of sparks, open flame or other ignition source. Do not smoke in the area where adhesive is being applied.
- **When using a full canister set, pull the trigger gradually until you reach the desired pressure. Pulling the trigger too aggressively could result in safety risks, such as a blow-back of adhesive on to the user.**
- Protect all surfaces in the immediate area of application from accidental contact with adhesive. Uncured foam may be cleaned off by using any commercially available polyurethane foam cleaner.
- **Do not** transfer used hoses to a new canister set in order to prevent cross-contamination.

### Section 2: First Aid

**EYES:** Flush with water for at least 15 minutes. Seek medical attention.

**SKIN:** Remove contaminated clothing. Wipe excess foam off with rags. Stop immediately and wash skin thoroughly with plenty of soap and water. Scrape off excess cured adhesive with an abrasive pad. Residual foam will gradually wear off. If irritation persists or difficulty breathing occurs, seek medical attention. Do not use solvent to remove adhesive.

**INHALATION:** Immediately move to fresh air. If breathing is difficult, have trained personnel administer oxygen. Seek medical attention.

**INGESTION:** Drink large quantities of water. DO NOT induce vomiting. Seek medical attention.

Refer to Safety Data Sheet for further information.

### Section 3: Personal Protective Equipment (PPE)

Two-component polyurethane canister adhesive products should always be used in a well-ventilated area.

- Avoid skin contact. Wear chemical resistant (e.g., nitrile) gloves, long sleeves and long pants to cover exposed skin. Adhesive canister products are strong adhesives; in addition, skin contact with pMDI can cause irritation and may lead to respiratory sensitization.
- **Required:** Wear protective glasses with foam gasket seal or goggles.

---

## Glove Selection

The following gloves provide protection from pMDI exposure.

- Nitrile gloves.
- Butyl, Laminated polyethylene (PE) or ethylenevinylacetate (EVA) laminated, or nitrile Medium Duty gloves.
- Neoprene, PVC, or nitrile Heavy Duty gloves.

## Section 4: Product Storage and Handling

KEEP ALL ADHESIVE CANISTERS OUT OF REACH OF CHILDREN.

Store at room temperature (60°– 90°F / 16°– 32°C) in a dry area. Do not expose products to open flame or temperatures above 100°F (38°C).

Cylinders and contents must be brought to between 70°– 90°F (21°– 32°C) for use. This normally requires 36 to 72 hours at room temperature.

Partially used canisters:

- Turn the valves into their OFF position.
- Do not drain the chemical from the hoses.
- Slide the safety on the applicator gun into the LOCKED position.
- Remove the old nozzle, but do not throw away. Clean off the end of the gun to ensure the chemical exits are not obstructed. Apply fresh lubricant to the black rubber O-ring. Reattach the old nozzle, which, clogged with adhesive, will keep air and moisture out of the lines.
- After every 7 days without use, dispense a small amount of chemical to prevent crystallization from occurring in the hoses.
- Remaining contents must be dispensed within 30 days of the date of initial use.
- Do not transfer used hoses to a new canister set in order to prevent cross-contamination.

## Section 5: Two-Component Canister Product Disposal

- During product disposal, wear recommended eye and skin protection. Maintain proper ventilation.
- Empty tanks completely of any remaining material.
- Add oil absorbent to waste components. Dispose of waste in an approved landfill.
- Turn empty canister upside down and open valve completely to relieve the canister of pressure.
- Once pressure is completely evacuated, wear safety glasses, locate and punch out the button on the shoulder of the canister using a non-ferrous punch.
- Empty cylinders can be sent to a metal recycler or an approved landfill.
- Check with your local waste disposal service for guidance.
- Cured adhesive is considered inert and can be disposed of with standard municipal waste.
- DO NOT INCINERATE CANISTERS.