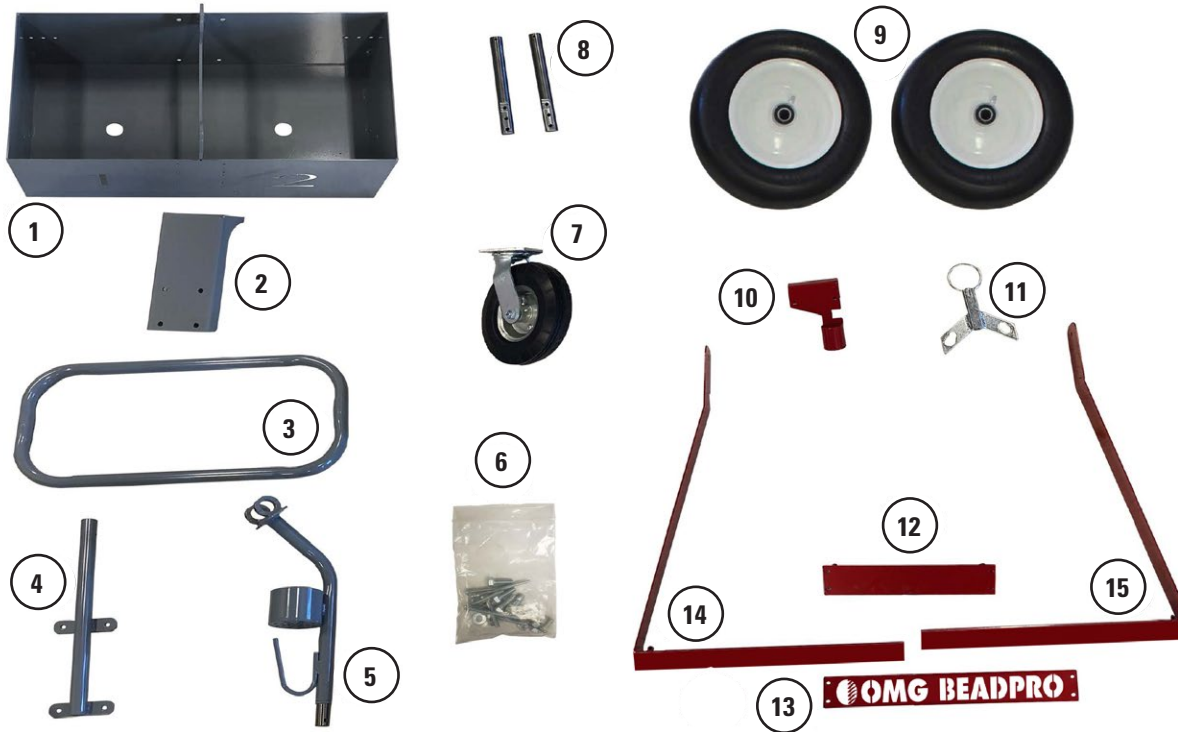


# BeadPro™ - Install Instructions

## BEADPRO KIT PARTS BREAKDOWN



#	SKU	Description	Weight	Qty
	OBBEADPRO	OMG BeadPro Cart	103 lbs.	1
	OBBP-HOSEKIT	12-inch On Center Hose Kit	0.5 lbs.	1
	OBBP-HOSEKIT60C	6 inch On Center Hose Kit	0.5 lbs.	1

### Contents Included in Kit

- |                         |                        |                 |
|-------------------------|------------------------|-----------------|
| 1. Main Box             | 7. Front Caster Wheel  | 13. Faceplate   |
| 2. Front Caster Support | 8. Rear Axles          | 14. BeadBar (R) |
| 3. Main Handle Bar      | 9. Rear Wheels         | 15. BeadBar (L) |
| 4. Lower Handle Bar     | 10. Applicator Holster |                 |
| 5. Upper Handle Bar     | 11. Wheel Lock         |                 |
| 6. Hardware             | 12. Backing Plate      |                 |

### Hardware Included:

- 4 pcs: 1/4 - x 3/4-in. Socket Hd Cap Screw
- 7 pcs: 1/4-in. Nylon Hex Nut
- 2 pcs: 1/4 - x 1 3/4-in. Carriage Bolt
- 4 pcs: 3/8 - x 1-in. Cap Screw
- 8 pcs: 3/8-in. Nylon Hex Nut
- 4 pcs: 3/8 - x 3/4-in. Socket Hd Cap Screw
- 6 pcs: 5/16 - x 3/4-in. Socket Hd Cap Screw

- 6 pcs: 5/16-in. Nylon Hex Nut
- 6 pcs: 5/16 - x 3/4-in. Cap Screw w/Lock-Tite
- 1 pcs: 1/4 - x 1 3/4-in. Hex Head Cap Screw
- 4 pcs: 3/8-in. Flat Washer
- 2 pcs: 3/16 - x 2-in. Cotter Pin
- 2 pcs: 5/16-in. Yellow Zinc Flat Washer

### Tools Required:

- 5/32-in. Allen Wrench
- 3/16-in. Allen Wrench
- 7/32-in. Allen Wrench
- 7/16-in. Wrench
- 1/2-in. Wrench
- 9/16-in. Wrench
- Grease Gun

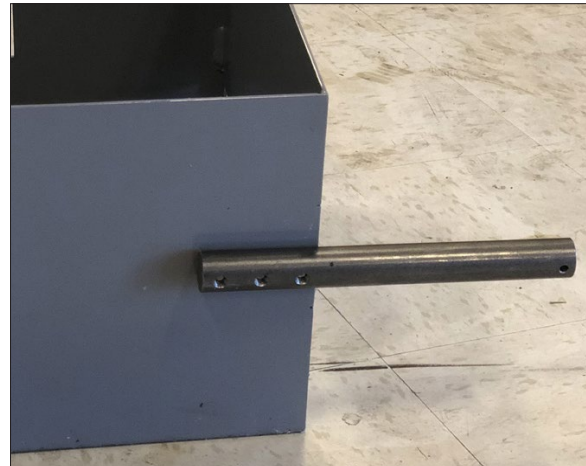
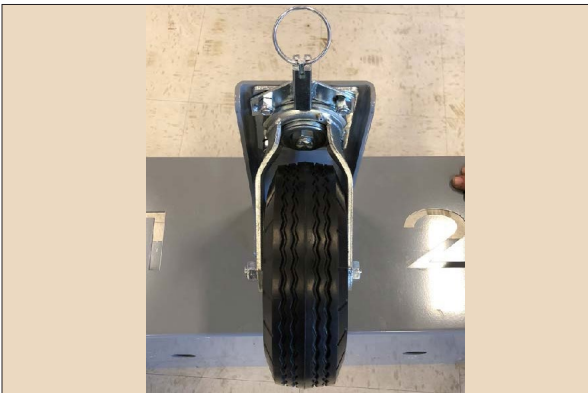
# BeadPro - Assembly Instructions

Please read and understand all instructions



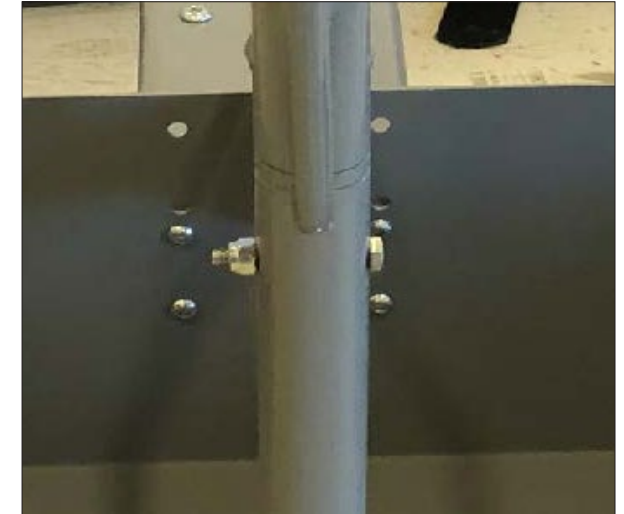
**1-** Install Front Caster Support (#2) on front of Main Box (#1) using four (4) 5/16-in. x 3/4-in. Socket Head Cap Screws and Four (4) 5/16-in. Nylon Hex Nuts.

**2-** Install Front Caster Wheel (#7) to Front Caster Support (#2) using four (4) 3/8-in. x 1-in. Socket Head Cap Screws, four (4) 3/8-in. Nylon Hex Nuts, and four (4) 3/8-in. Flat Washers. Before installing Flat Washer and Lock Nuts, place Wheel Lock (#11) on Front Bolts. **Check to make sure wheel lock engages before tightening.**



**3-** Install Rear Axles (#8) using six (6) 5/16-in. x 3/4-in. Cap Screws with Lock-Tite (3 per axel). Make sure bolt heads are inside Main Box and that the **flat side of axle (#8) is against the main box (#1).**

**4-** Install Lower Handle (#4) using four (4) 3/8-in. x 3/4-in. Socket Head Cap Screws and four (4) 3/8-in. Nylon Hex Nuts. Bolt heads should be inside Main Box.

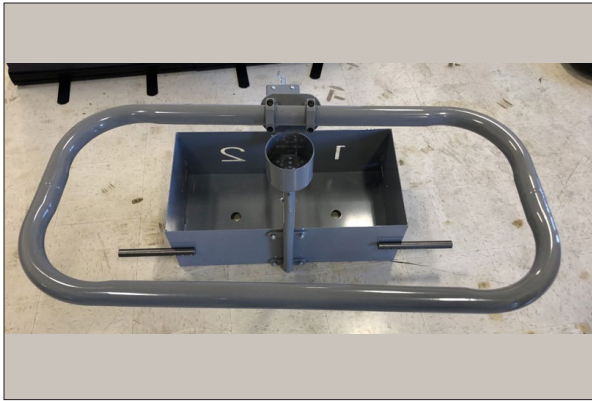


**5-** Install Upper Handle (#5) using One (1) 1/4-in. x 1 3/4-in. Hex Head Cap Screw and One (1) 1/4-in. Hex Nut. **Tighten Securely!**

**6-** Remove top clamps from Upper Handle (#5)







**7-** Place Main Handle Bar (#3) into open clamps. Replace top of clamps from Step Six and tighten.

**Position to Comfort.**

**8-** Install Applicator Holster (#10) using two (2) 1/4 - x 1 3/4-in. Carriage Bolts and two (2) 1/4-in. Nylon Hex Nuts. Make sure main circular tube is facing towards main box. **Position to Comfort.**



**9-** Assemble BeadBar (#14 & #15) with Backing Plate (#12) and Faceplate (#13) using four (4) 1/4 - x 3/4-in. Socket Head Cap Screws and four (4) 1/4-in. Nylon Hex Nut by placing BeadBar (#14 & #15) on a flat surface, place the Backing Plate (#12) behind the bar and the Faceplate (#13) in front of the bar and lining up screw holes.

**10-** Install Assembled BeadBar using two (2) 5/16- x 3/4-in. Socket Head Cap Screws, two (2) 5/16-in. Nylon Hex Nuts, and two (2) 5/16-in. Yellow Zinc Flat Washers. Place bolt through Main Box, place Flat Washer on outside of box. Then install the BeadBar. Place Hex Nut on last.



**11-** Install Rear Wheels (#9) using two (2) 3/16- x 2-in. Cotter Pins. After placing Cotter Pin through Axle, make sure to bend the Cotter Pin around the Axle.

**12-** Grease all Wheels. There are three grease ports on the front Caster Wheel (top swivel, axle and wheel) and one grease port on each of the Rear Wheels (#9).



**OMG**  
**BeadPro**<sup>™</sup>

**OMG**  
**ROOFING PRODUCTS**