



Hercules®-Plus RetroDrain® with Vortex Breaker Strainer™



PRODUCT DATA SPECIFICATIONS

PRODUCT DESCRIPTION

OMG Hercules-Plus RetroDrains feature the OMG vortex breaker technology integrated into the cast aluminium strainer dome. With vortex breaker technology, Hercules-Plus drains can provide up to 2.5 times greater water flow, compared to the existing Hercules drain, which means that water and excessive weight can leave the roof quickly.

In addition to faster water flow off the roof, the vortex breaker can greatly reduce 'chugging' which can damage plumbing systems.

The OMG Hercules-Plus RetroDrain features a one-piece spun aluminium body for strength and durability. The drain flange has a depressed sump area to facilitate water drainage and the original U-Flow® Seal offers a mechanical watertight connection to PVC or cast-iron pipes to prevent water from backup damage.

FEATURES & BENEFITS

- 75 mm & 100 mm drains comply with BS EN1253-3-2015.
- Up to 2.5 times greater water flow vs standard Hercules Drains so water and excessive dead load weight can get off the roof faster.
- Safety yellow design stands out on the roof and helps protect it from accidental damage.
- The strainer dome is made of heavy-duty cast aluminium for strength, durability and long life on the roof.
- The flat clamping ring design allows increased flow for better performance.
- One-piece seamless aluminium body provides strength and durability without separation of the flange from the stem.
- Extra large flange allows positive attachment of roof flashing membrane while the sump area facilitates drainage.

- Simple and easy to install from rooftop without disturbing building occupants.
- 305 mm long drain stem accommodates most existing field conditions. Custom lengths available.
- Incorporates the original U-Flow Seal which exceeds the ANSI/SPRI Standard for back-flow pressure.

APPROVALS & STANDARDS

BS EN1253-3-2015 is a SPRA (Single Ply Roofing Association) component quality standard test for rainwater outlet flow capacity. OMG Hercules Drains (75 & 100 mm), have been tested to comply by CRM Rainwater Drainage Consultancy, LTD., Farnworth, England to exceed the requirements. For details, contact OMG Roofing Products.

ANSI/SPRI RD-1 – developed by SPRI (sheet membrane and component suppliers to the commercial roofing industry), a certified canvasser of the ANSI (American National Standards Institute), and features a test protocol designed to assure a leak-free connection to existing plumbing.

PHYSICAL DATA

DRAIN BODY		SEAL	
3 mm spun aluminium		Watertight U-Flow mechanical seal requires U-Flow screwdriver	
FLANGE		STRAINER DOME	
445 mm diameter with sump area		Yellow Vortex Breaker made of cast aluminium	
STEM		CLAMP RING	
305 mm length		Flat aluminium	

ORDERING INFORMATION

CAT. NO.	SIZE MM	DESCRIPTION	PKG	DIMENSIONAL WEIGHT KGS
HDAL3V-FCR	75	Standard	Each	12.2
HDAL4V-FCR	100	Standard	Each	12.2
HDAL6V-FCR	150	Standard	Each	12.2



Hercules®-Plus RetroDrain® with Vortex Breaker Strainer™

INSTALLATION PROCEDURE

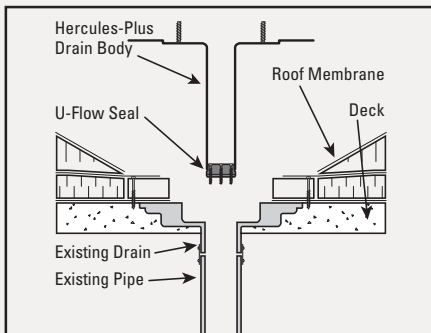
FOR USE WITH

All types of roof covers.

JOB PREPARATION

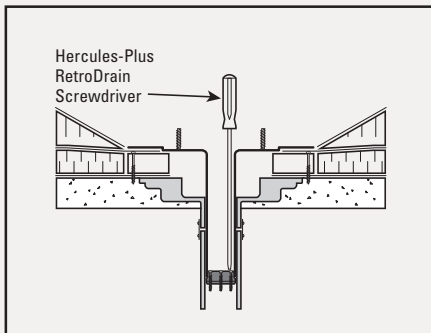
Remove existing strainer dome and clamping ring. Remove other existing drain components as required to enable the Hercules Drain flange to lie flush on roof membrane. Remove any debris or constricting materials in the existing drain pipe that interferes with proper installation.

STEP 1



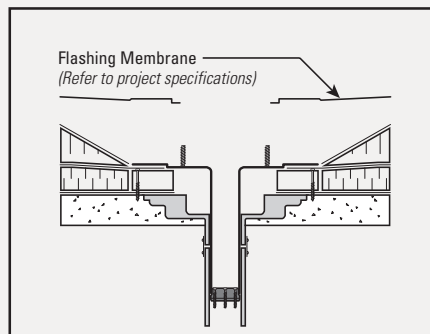
Examine the existing water leader to make sure there are no elbows that prevent the drain stem from being fully inserted into the pipe. Insert U-Flow® Seal into end of drain stem and tighten screws enough to hold the seal in place during installation. Insert assembled drain into existing leader pipe until flange lies flush on roof membrane.

STEP 2



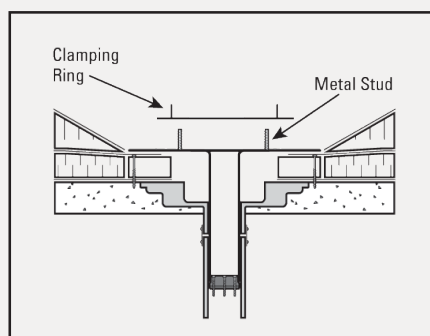
Alternately tighten seal compression ring screws with a U-Flow Screwdriver until hand tight. Hercules-Plus is correctly installed when pressure placed on the drain body results in no vertical movement. Do not overtighten the screws.

STEP 3



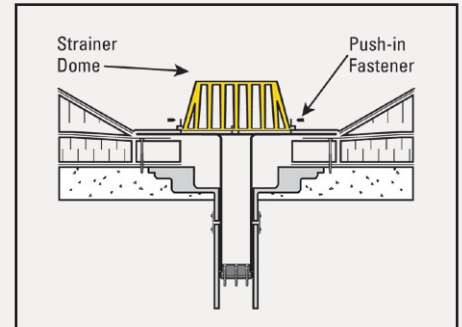
Secure the drain flange to the roof surface/nailed using a minimum of three pan-head fasteners, evenly spaced around the flange. The flashing membrane must cover and extend past the fastener head. Flashing membrane must be installed as per roof membrane manufacturer's instructions.

STEP 4



Place clamping ring over the metal studs. Install stainless steel nut and lock washers, tightening clamping ring against the membrane flashing until secure.

STEP 5



Install the strainer dome into the retaining clips, then insert nylon push-in fastener into the appropriate height hole in each of the three retaining clips.

**For technical assistance contact
OMG at +1 413.789.0252**



ROOFING PRODUCTS

153 BOWLES ROAD,
AGAWAM, MA 01001 USA
+1 413.789.0252

Superior productivity. Superior performance.

INFOEUROPE@OMGINC.COM

Find Us at: www.omgroof.com/euro-reps

