



Hercules®-Plus RetroDrain®

INSTALLATION PROCEDURE

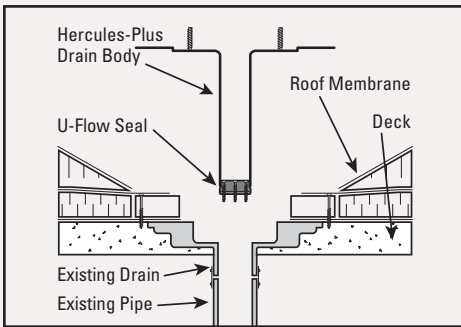
FOR USE WITH

All types of roof covers.

JOB PREPARATION

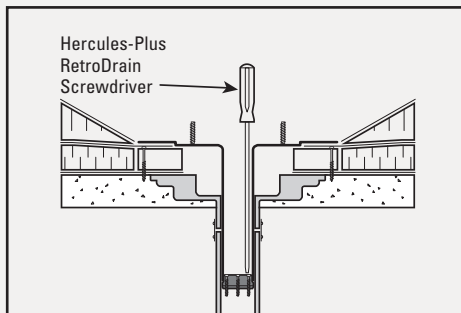
Remove existing strainer dome and clamping ring. Remove other existing drain components as required to enable drain flange to lie flush on roof membrane. Remove any debris or constricting materials in the existing drain pipe that interferes with proper installation.

STEP 1



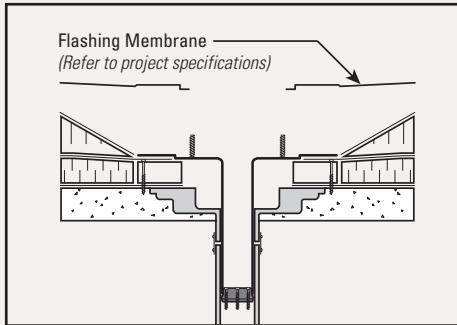
Examine the existing water leader to make sure there are no elbows that prevent the drain stem from being fully inserted into the pipe. Insert U-Flow® Seal into end of drain stem and tighten screws enough to hold the seal in place during installation. Insert assembled drain into existing leader pipe until flange lies flush on roof membrane.

STEP 2



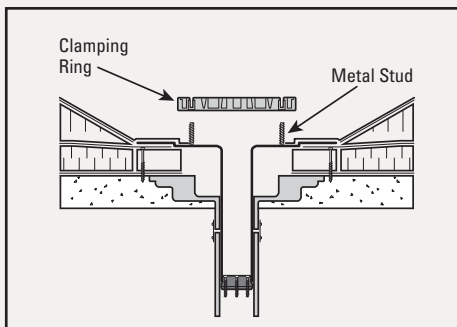
Alternately tighten seal compression ring screws with U-Flow Screwdriver until hand tight. Hercules-Plus is correctly installed when pressure placed on drain body results in no vertical movement. Do not overtighten the screws.

STEP 3



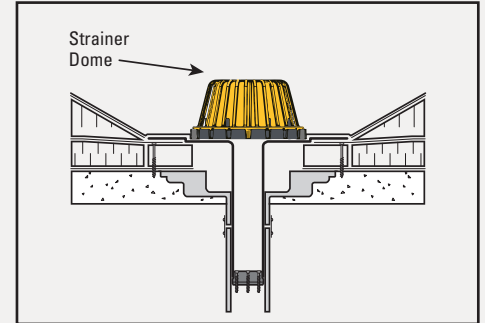
Secure the drain flange to the roof deck/nailer using a minimum of three pan-head fasteners, evenly spaced around the flange. The flashing membrane must cover and extend past the fastener head. Flashing membrane must be installed per roof membrane manufacturer's detail.

STEP 4



Place clamping ring over metal studs. Install stainless steel nut and lock washers tightening clamping ring against membrane flashing until secure.

STEP 5



Install strainer dome with integrated Vortex Breaker by aligning screw holes with the holes in the clamping ring. Secure with screws provided.

**For technical assistance contact
OMG at 800-633-3800.**



ROOFING PRODUCTS

153 BOWLES ROAD, AGAWAM, MA 01001 USA

800-633-3800 413-789-0252 OMGROOFING.COM

Hercules®, RetroDrain® and U-Flow® are trademarks of OMG, Inc. Copyright © 2018 OMG, Inc. All rights reserved.

Superior productivity.
Superior performance.

