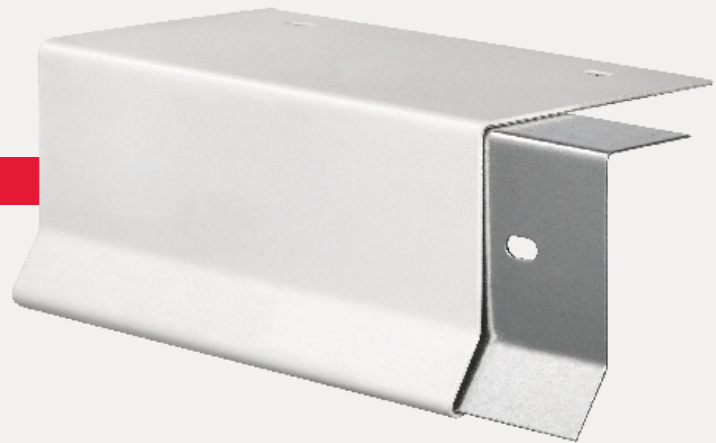




Drip Edge Fascia



PRODUCT DATA SPECIFICATIONS

PRODUCT DESCRIPTION

OMG Drip Edge Fascia is an easy to install, tested and warranted system that acts as the roof's first line of defense against wind and water infiltration. The system consists of a formed 20 Ga. Galvanized cleat, formed fascia cover and hidden 4 inch splice plates. Fascia covers are available in .040-, .050., or .063-in. aluminum. Also available in 24 Ga. and 22 Ga. Kynar 500 coated steel. In addition, the system is available in TPO and PVC clad metal for easy application on thermoplastic membrane roof systems. OMG Drip Edge Fascia comes in 10-ft. lengths and with face sizes from 3- to 12 inches high to accommodate most building designs.

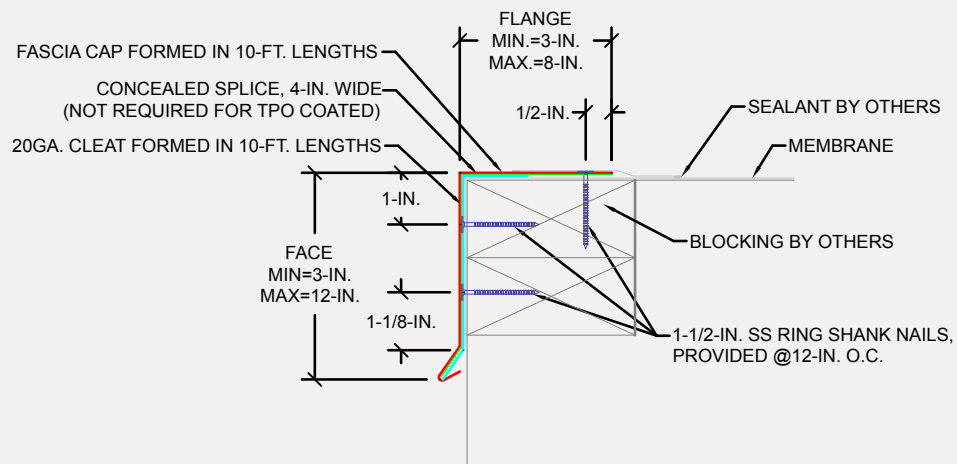
- ANSI/SPRI/FM4435/ES-1 tested and approved.
- 20 year Excel Warranty!

Inside and outside miters and end-caps are available as standard accessories along with pre-notched for radius applications. Standard fascia miter leg lengths are 24 inches nominal. Standard fascia miter angle is 90°, and custom miter angles are also available.

FEATURES & BENEFITS

- ANSI/SPRI/FM4435/ES-1 tested and FM approved.
- Includes 25-year Excel Warranty for wind speeds up to 155 mph.
- Engineered cleat with locator flange and features pre-punched slotted holes 12 inches OC for easy attachment and installation.
- Provided with 1½-in. stainless steel nails.
- Concealed splice plate enhances color continuity, prevents water infiltration at joints and maintains overall professional appearance.

ANSI/SPRI/FM4435/ES-1 TEST PRESSURES UP TO 239 PSF (HORIZONTAL)



FOR MASONRY APPLICATIONS, PLEASE CONTACT US.
CONTACT US FOR APPROPRIATE RECOMMENDATIONS NEEDED TO MEET/EXCEED



Drip Edge Fascia

INSTALLATION PROCEDURE

SPECIFICATIONS *(short form)*

The roof edge for single-ply roofing material shall be Drip Edge Fascia as manufactured by OMG, Inc. Drip Edge fascia shall be (specify size and/or gauge) with a minimum 20 gauge galvanized steel cleat. Fascia and cleat will be in 10-ft. lengths.

DESCRIPTION

Drip Edge is a decorative metal fascia with a continuous galvanized steel cleat designed to terminate single-ply roofing at the perimeter and allow water to run off the roof.

The system shall be watertight with concealed joint splice plates provided with fasteners. Drip Edge covers are available in .040., .050., or .063-in. aluminum. Also available in 24 Ga. and 22 Ga. Kynar 500 coated steel.

INSTALLATION PROCEDURES

This is a general outline. Refer to our full installation guide for details.

Preparation:

The roof edge must be level and wood nailers must be straight. Do not distort the vertical face of the spring cleat. Use shims to keep nailing surface flat. Locate the top lip of the cleat squarely on the top edge of the roofing membrane and treated wood nailer. Secure the continuous galvanized spring cleat to the vertical face of the wood nailer using the 1½-in. SS ring shank nails provided in each pre-punched hole. Allow 1/8-in. gap between sections for thermal movement.

Place a concealed joint splice in each side of the miter. Center the miter over the cleat kick-out and rotate back onto the roof. Install splice plates into each end of the straight sections.

Hook each section over the top of the cleat kick-out and rotate onto the roof.

Allow 1/4-in. gap for expansion. Review lengths of all straight pieces prior to cutting to avoid creating relatively short sections of fascia adjacent to full length sections.

FINISHES

- Mill aluminum
- Pre-Finished Kynar 500 from the manufacturer's standard color chart
- Premium pre-finished Kynar 500 from the manufacturer's color chart
- Post-Finished Kynar 500
- Pre-Finished anodized aluminum – clear, bronze or black
- Post-Finished anodized aluminum

GUARANTEE

A. Manufacturer's Standard Warranty:

Warranted materials shall be free of defects in material and workmanship for five years after shipment. If, after inspection, the manufacturer agrees that materials are defective, the manufacturer shall at their option repair or replace them.

B. Special 25-Year Excel Warranty:

Manufacturer shall guarantee that a standard size roof edge system, when installed per manufacturer's instructions, will not blow off, leak, or cause membrane failure, even in wind conditions up to 155 mph., or the manufacturer shall replace or repair its materials.

C. Decorative Finish Warranty

- 30 year, pre-finished Kynar 500 warranty
- 20 year, post-finished Kynar 500 warranty

QUALITY ASSURANCE

The fascia product shall be listed in the current Factory Mutual Research Corporation Approval Guide approved by ANSI/SPRI/FM 4435/ES-1 SPRI Test Method RE-2 Pull-Off test for fascia. Fascia shall be certified by the manufacturer to design pressures as indicated in current edition of Wind Resistance Standard for Edge Systems Used with Low Slope Roofing Systems.

TECHNICAL SERVICES

Shop drawings are available from the factory. Product samples, detail sheets, color chips and color charts are ready for your submittal package. Long form specifications and CAD details are available on our website. For personal assistance with questions or submittals, contact your OMG local representative.



4 COMMERCE WAY, ARDEN, NC 28704 USA
800-892-9173 828-676-1700 OMGEDGESYSTEMS.COM

Copyright © 2020 OMG, Inc. All rights reserved. TerminEdge is a trademark of OMG, Inc.

Superior productivity.
Superior performance.

